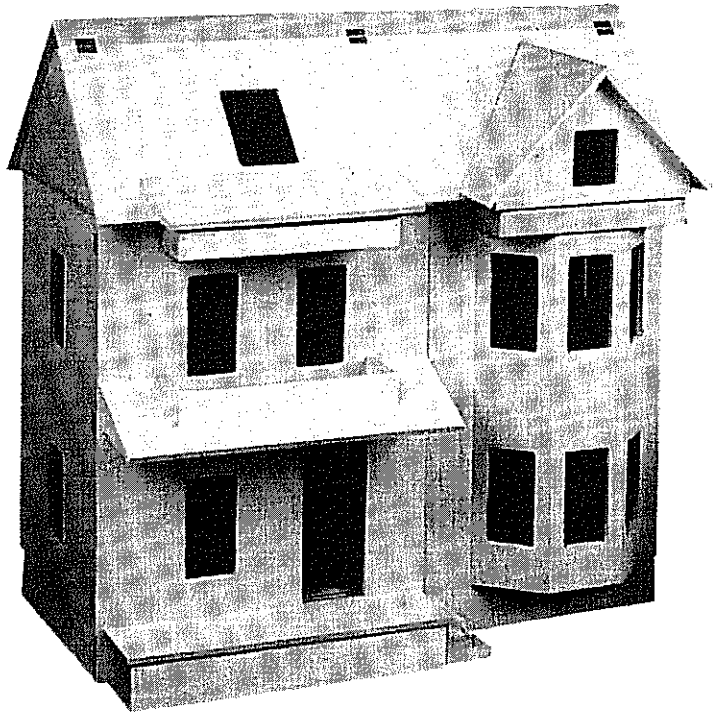


Assembly Instructions for Kit # H-303 Houseworks Victorian Shell

Use Only These Instructions for Shell Assembly



Kit # H-303

The Houseworks Victorian Shell

This dollhouse shell is produced by **REAL GOOD TOYS** and is visually similar to the Houseworks 3-in-1 Planbook dollhouses. If you already have the Planbook, set it aside until your RGT shell is complete so you won't be confused by the shell construction the Planbook describes. The instructions you are reading right now should be used exclusively for the assembly of this dollhouse shell. The Planbook is **ONLY** useful for the finishing and components part of your dollhouse project.

This house kit is compatible with the Houseworks architectural components listed in the Planbook as "Victorian Accessories" (page 7) and the #6011 French door.

Finishing kits are packed by Houseworks Ltd, and are available from Houseworks or from **REAL GOOD TOYS**.

- | | |
|------------------------------------|------------------------|
| 1) 7002 dormer | 5) 6007 interior Doors |
| 2) 7036 (3/8)clapboard siding: 24" | 1) 6013 front Door |
| 1) 7039 (3/8)clapboard siding: 12" | 6) 5032 window |
| 1) 7104 square shingles | 7) 5042 window |
| 8) 7004 square shingles | 1) 5039 gable window |
| 1) 7005 fishscale shingles | 1) 5004 dormer window |
| 3) 7030 porch post | 6) 5025 shutter pairs |
| 1) 7011 porch railing | 6) 1114 knob with key |
| 7) 7009 spindles | 1) 1107 knocker |
| 1) 7027 eave brackets | 1) 7000 stairs |
| 1) 7028 eave brackets | 2) 7012 newells |
| 4) 7046 corner trim | 1) 7019 spindles |

Real Good Toys

... Tips for Building the Perfect Dollhouse



- It's important to follow the instructions in order. Take one step at a time. When you finish each step, put a check in each box as you go along to keep from getting ahead of yourself.

- You need a work area where you can keep all of your supplies, material, and tools at hand. Hopefully, you'll be able to leave your work out at the end of each work session. An assembly table at least 2' x 3' can be a real plus.

- Keep all the packs, unopened, together in the kit box until they are asked for in the instructions. Return the packs to the box after needed parts are used. You don't want unidentified parts strewn all over your work space.

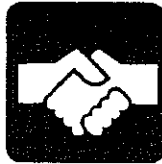


- Don't remove any pieces from the packs until the instructions call for them. Remember - no unidentified pieces! You might want to write each part's name on the part. Write lightly with a pencil and erase later.

- Illustrations designed to help you build the perfect dollhouse are found at the end of this set of instructions. Refer to the illustrations when the instructions tell you to do so.

- We recommend that you try a dry run for each section before final assembly to check parts, to see how the parts locate and to understand the assembly. Then you

can comfortably start out again, following the instruction steps - this time - using glue and nails. This dry run will help you avoid mistakes. In the dry run steps, you will understand the overall plan of your dollhouse and how it will work for you.



- We have found that sometimes assembly is easier with two people. So, try to have someone around to give you a hand when you need it.

- "Quick Grab" glue is extremely handy for things which can't be nailed or taped while drying. It is the only glue we recommend for gluing on clapboard siding.



- White or yellow wood glue (such as "Elmers") is an excellent glue for most uses. When applying this glue, squeeze the excess air out of the top of the glue bottle before turning it over. Then when you release pressure from the bottle at the end of a dab or line of

glue, the bottle will suck the remainder of the stream of glue back in rather than running it all over your work. Between steps, go back and clean up glue after gluing and nailing. A paintbrush in a water cup may be pinched dry and used to wipe up excess glue.

- The stair, window and door holes have rounded corners which must be squared. Use a knife, file or very fine-bladed saw and work from the surface inward on both sides to avoid "split out."

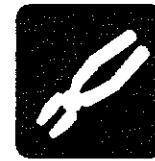


- A utility knife with a new sharp blade is safer and easier to use than a jack knife or kitchen knife for trimming, customizing and cutting.

- When sanding use 100 or 120 grit sandpaper. Sand off any rough edges before assembly.

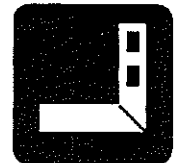
- Some people prefer tack hammers. Sand the striking surface to reduce bending nails.

- Whenever possible, mark a butt joint on the panel through which the nail will pass first, then remove the panel and PRE-PUNCH nail holes from the back side, on center, between marks. This gives a perfectly centered nail in the joint when nailed through the hole from the front and reduces "split out" when final nailing and gluing are done. To PRE-PUNCH a hole, drive a nail through the panel from the back side and then pull the nail back out.



- A brad pusher or pliers give more control for small nails than a hammer, and without impact. Set nails the last little bit with a nail set and hammer after the glue is dry.

- Be sure to FOLLOW THE INSTRUCTIONS EXACTLY when they require keeping things "square." It is VERY IMPORTANT. If you don't quite understand how to do it, ask someone who does.



- Enjoy yourself!



BASIC TOOLS

Small Hammer and a Nail Set
12" Square
Ruler
Sharp Utility Knife

Fine Toothed Saw
Sanding Blocks
Pliers
Glue

Assembly Instructions for Kit # H-303 Houseworks Victorian Shell

KIT #H303 PARTS LIST

- (1) Set of Instructions

House Body

- (1) Base Floor 31 $\frac{1}{8}$ " x 14 $\frac{1}{2}$ "
(1) Middle Floor 31 $\frac{1}{8}$ " x 14 $\frac{1}{2}$ " with stair hole
(1) Top Floor 31 $\frac{7}{8}$ " x 16 $\frac{7}{8}$ "
(1) Rear Wall 20 $\frac{3}{4}$ " x 31 $\frac{7}{8}$ "
(2) Side Wall 20 $\frac{3}{4}$ " x 14 $\frac{1}{2}$ " with window openings
(1) Back Roof 33" x 12 $\frac{1}{2}$ "
(1) Top Front Roof 33" x 17 $\frac{1}{8}$ "
(2) Side Triangle 8 $\frac{7}{16}$ " tall
(2) Attic Partitions 8 $\frac{7}{16}$ " tall x 10 $\frac{1}{4}$ "
(2) Foundation 31 $\frac{3}{8}$ " x 2 $\frac{5}{8}$ "
(4) Foundation 14" x 2 $\frac{3}{8}$ "
(4) Dividers 10" x 14 $\frac{1}{2}$ " with door opening
(1) Divider 10" x 9 $\frac{1}{2}$ "
(1) Divider 10" x 5 $\frac{1}{2}$ " with door opening
(1) Divider 10" x 8 $\frac{1}{2}$ " with french door opening
(1) Upper Stair Blind 8"
(1) Lower Stair Blind 2 $\frac{1}{2}$ "
(4) Eave Returns $\frac{3}{8}$ " x $\frac{1}{2}$ " x 2 $\frac{1}{4}$ "
(9) Hinges
(36) Screws

Victorian Front

- (1) Front Roof 33" x 11"
Porch Steps
(1) 1" x $\frac{3}{4}$ " x 4 $\frac{1}{2}$ "
(1) 1 $\frac{3}{4}$ " x $\frac{3}{4}$ " x 4 $\frac{1}{2}$ "
(1) 2 $\frac{1}{2}$ " x $\frac{3}{4}$ " x 4 $\frac{1}{2}$ "
(1) Left Front Panel 23 $\frac{3}{16}$ " x 17 $\frac{5}{8}$ " with window and door openings
(1) Porch Foundation 16 $\frac{1}{2}$ " x 27 $\frac{1}{16}$ "
(2) Porch Foundations 4 $\frac{3}{16}$ " x 27 $\frac{1}{16}$ "
(2) Porch Floors 17" x 4 $\frac{3}{4}$ "
(2) Middle Triangle 4 $\frac{3}{4}$ " x 2"
(1) Middle Porch Roof 17 $\frac{1}{2}$ " x 6" beveled, with 4" x 11 $\frac{1}{2}$ " cutout
(1) Balcony Front 11 $\frac{1}{2}$ " x 2 $\frac{1}{2}$ "
(2) Balcony Side 3 $\frac{5}{16}$ " x 2 $\frac{1}{2}$ "
(1) Balcony Ceiling 10 $\frac{3}{4}$ " x 3 $\frac{5}{16}$ "
(1) Balcony Facia Front 11 $\frac{1}{2}$ " x 1 $\frac{3}{8}$ "
(2) Balcony Facia Side 3 $\frac{5}{16}$ " x 1 $\frac{3}{8}$ "
(1) Porch Roof Base 12 $\frac{1}{2}$ " x 27 $\frac{1}{16}$ " - rabbited bevel
(3) "V40" triangle 1 $\frac{1}{8}$ " x 3 $\frac{1}{2}$ "
(1) Porch Top Roof 13 $\frac{1}{2}$ " x 4 $\frac{7}{8}$ " beveled
(1) Right Front Panel 23 $\frac{3}{16}$ " x 14 $\frac{3}{16}$ "

- (3) Bay Floor 9 $\frac{1}{16}$ " x 2 $\frac{3}{4}$ ", mitered
(3) Bay Front: left; right; and center 19 $\frac{5}{8}$ " x 4 $\frac{3}{8}$ " with windows
(1) Right Facia Front 11 $\frac{1}{8}$ " x 1 $\frac{3}{8}$ "
(2) Right Facia Side 3 $\frac{1}{8}$ " x 1 $\frac{3}{8}$ "
(1) Bay Ceiling 10 $\frac{3}{8}$ " x 3 $\frac{1}{8}$ "
(1) Gable Front 6 $\frac{7}{8}$ " tall x 11 $\frac{1}{2}$ "
(1) Gable Floor 10 $\frac{3}{4}$ " x 2 $\frac{3}{8}$ "
(2) Gable Wall 2 $\frac{1}{2}$ " x 1" with mitered inlet
(1) Gable Left Roof
(1) Gable Right Roof

Congratulations on your purchase of a Houseworks Dollhouse. Your dollhouse has been precision crafted in Vermont with meticulous care by our craftspeople using only the finest quality materials. This dollhouse will last for years, even generations, if proper care and attention is given during assembly.

You may have chosen finishing touches such as wallpaper, flooring, or wiring. Plan ahead to determine which stage of assembly is the easiest for adding these things.

PLEASE READ ALL INSTRUCTIONS
(including the *Tips for Building the Perfect Dollhouse* page).

**DRY FIT ALL THE PARTS BEFORE
OPENING YOUR GLUE TUBE.**

Now, you're ready to begin!

1. HOUSE BODY ASSEMBLY

A. Glue and nail one side panel to the base floor (side panel overlaps the floor). The 2 3/8" window space is at the side panel bottom edge. Check **ILLUSTRATION #5**. Repeat for the other side panel. Use an assistant, or the middle floor for support.

B. Set dividers against the side panels to locate the middle floor. See **ILLUSTRATION #5**. Make sure the stairhole is in proper position. (**ILLUSTRATION #1**). Glue and nail the side panels to the middle floor.

C. If you wish to have windows and a door in the rear panel, you may cut them using **ILLUSTRATION #2** as a guide or order the "Houseworks Cut Rear Panel" through your dealer or from **REAL GOOD TOYS**.

Before attaching the rear panel you may wish to pre-punch a nail hole for the middle floor center by tracing its location and driving a nail through, then pulling it out. Do this with the house on a flat surface with the dividers in place. Attach the rear panel. Glue and nail.

D. Assemble the house body foundation. (**ILLUSTRATION #3**)

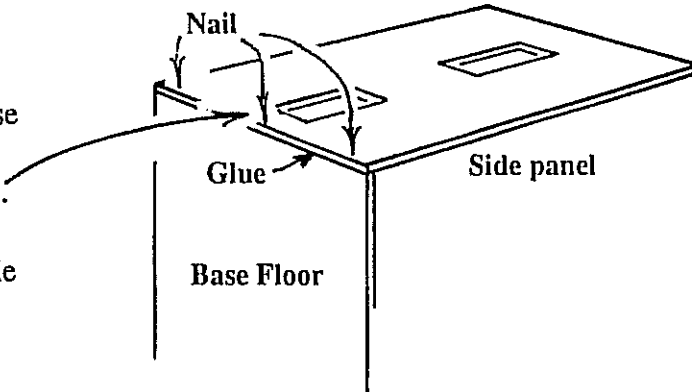
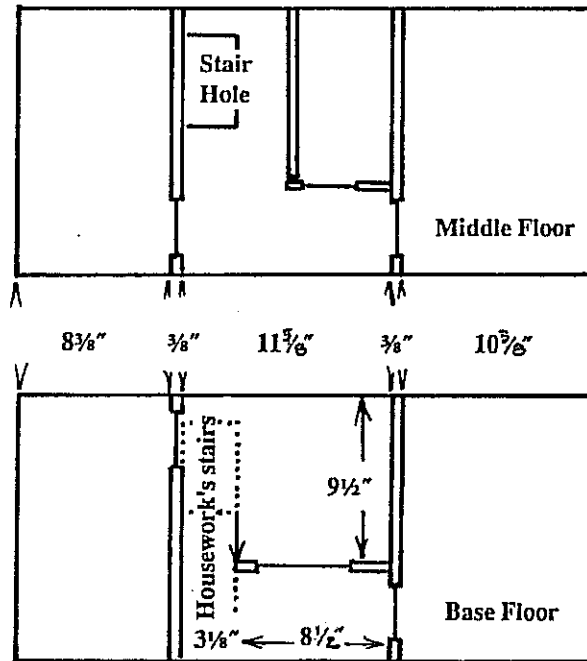


ILLUSTRATION #1
Locate dividers before assembly



Trace stair hole to check divider location

ILLUSTRATION #2

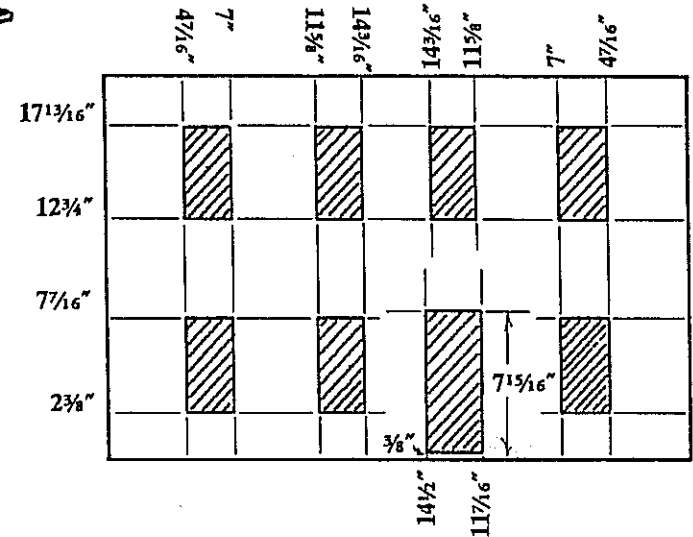
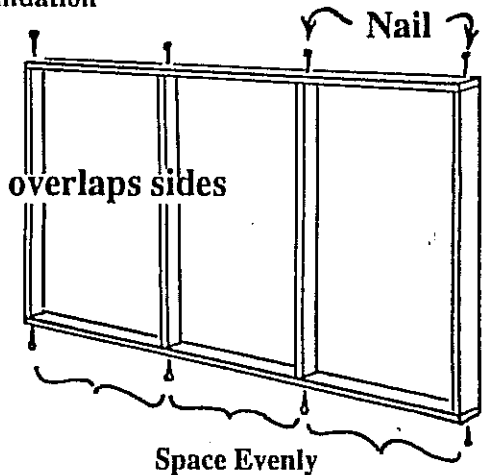


ILLUSTRATION #3

Foundation

Note:
front/back overlaps sides



E. Glue and nail the top floor on the top edge of the sides and rear. Overlap $\frac{1}{2}$ " at the rear and $1\frac{1}{2}$ " at the front (away from the stair hole). (ILLUSTRATIONS # 4 and #5)

F. Attach the foundation assembly to the house body flush at the front and spaced evenly at the sides and back.

G. Glue and tape the triangles to the outer edges of the top floor. Use dividers to hold them square while they dry.

H. Attach the rear roof and top front roof as shown with the attic partitions in place. Make sure the eaves are even.

I. Tape the front roof in place, then mount the hinges as shown. (ILLUSTRATION #6)

ILLUSTRATION #5

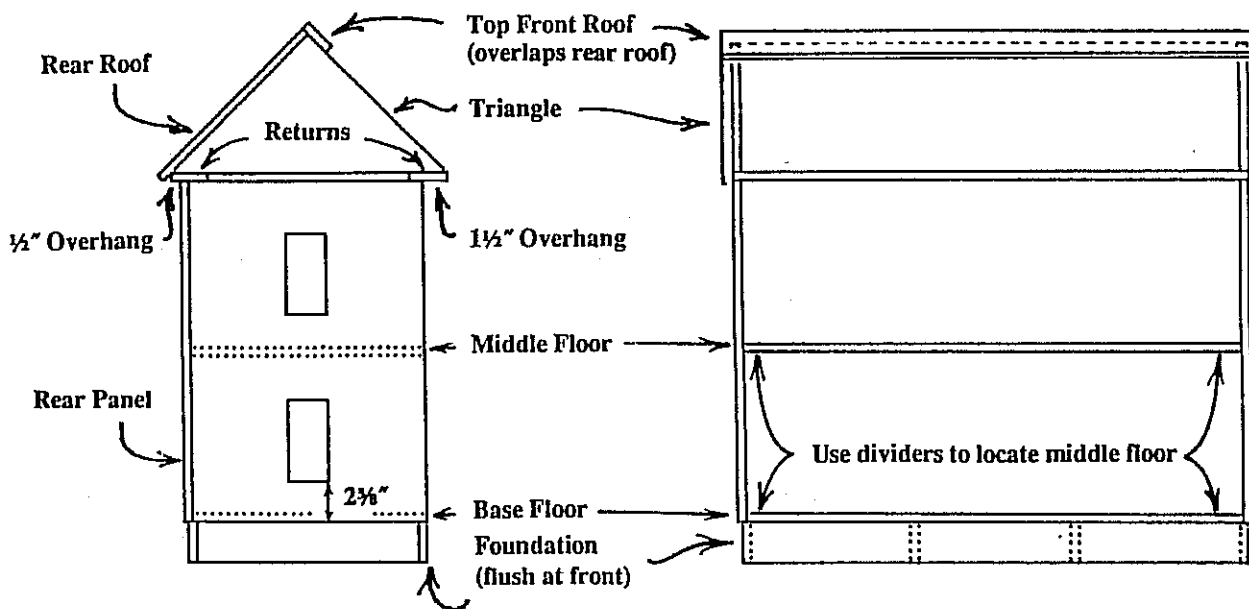


ILLUSTRATION #4

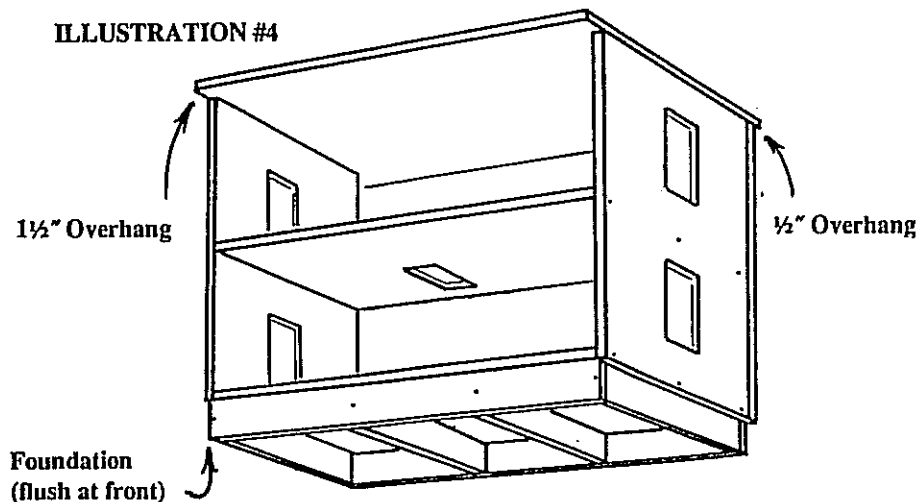
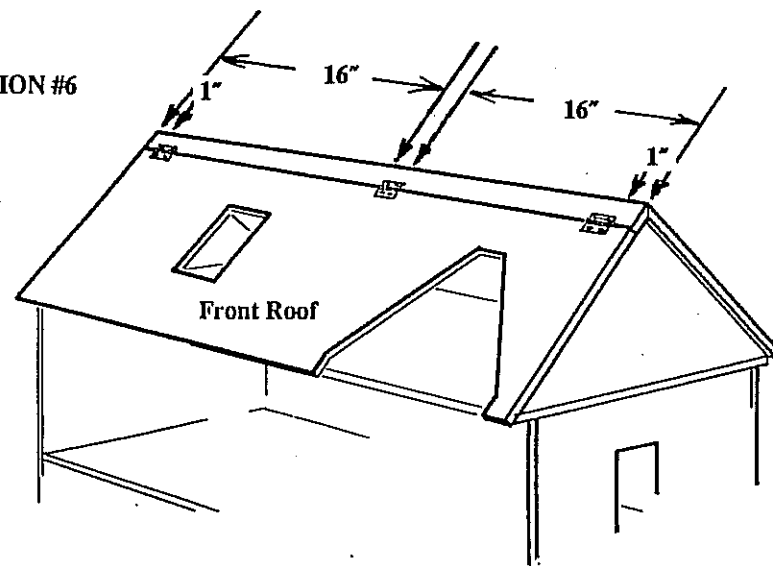


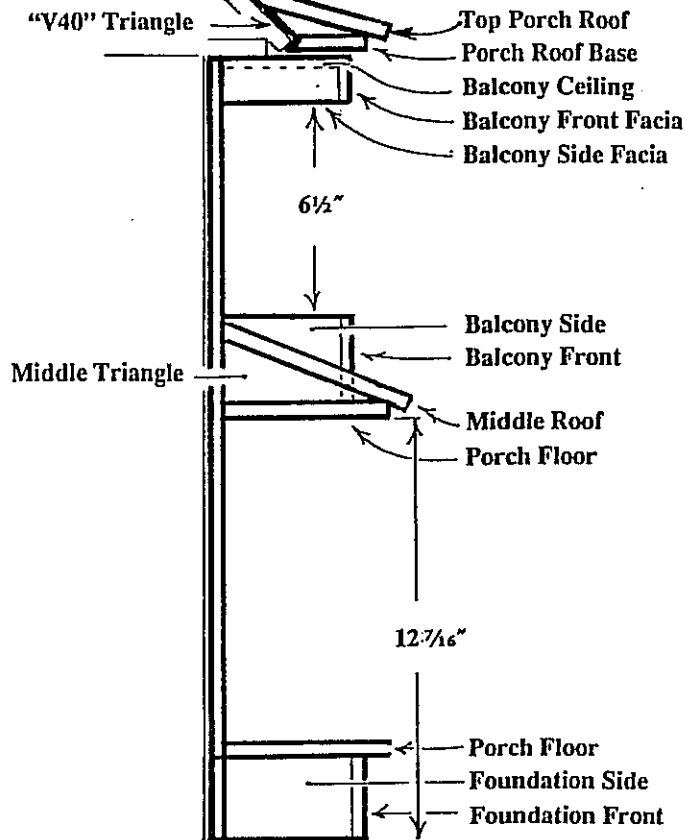
ILLUSTRATION #6



2. VICTORIAN LEFT FRONT ASSEMBLY

A. Assemble the porch foundation and one (1) floor as shown. (ILLUSTRATION #7)

- The front foundation (16½" x 27/16") overlaps the side foundation (43/16" x 27/16")
- The porch floor (17" x 43/4") is flush at the back and overlaps the foundation evenly elsewhere.



B. Attach the porch base assembly to the left front panel, centered side to side and flush at the bottom as shown. (ILLUSTRATION #8) Glue, let dry, and nail from behind.

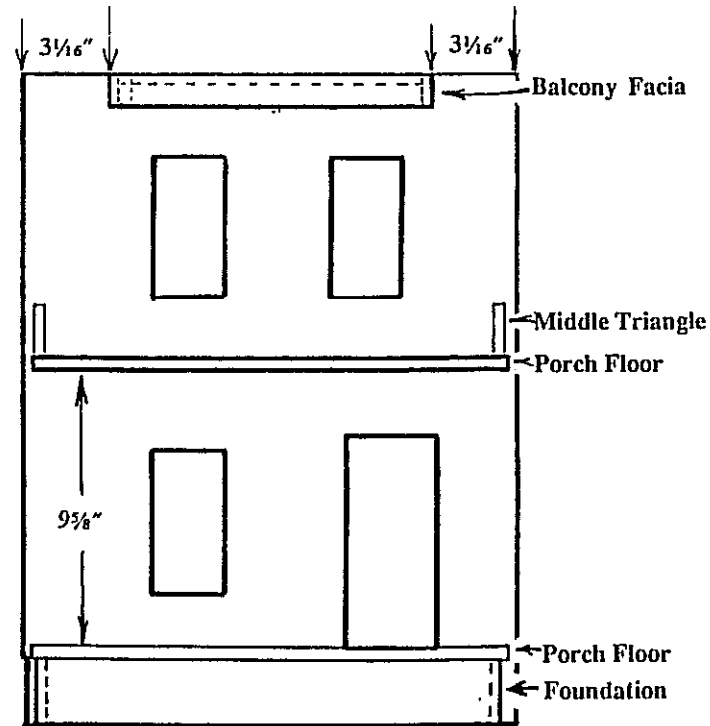
C. Glue the second porch floor to the front panel spaced as shown. (ILLUSTRATION #8)

D. Glue the middle triangles (43/4" x 2") flush at the ends. (ILLUSTRATION #8)

E. Pre-assemble the balcony front (11½" x 2½" and the sides (35/16" x 2½"). The front overlaps the sides. Glue to the front panel and middle porch floor. Locate with the porch middle roof.

F. Glue on the middle roof (ILLUSTRATION #7). The cutout fits around the balcony.

G. Pre-assemble the facia front (11½" x 13/8"), sides (35/16" x 13/8"), and balcony ceiling (103/4" x 35/16"), then glue in place. The front overlaps the sides. (ILLUSTRATIONS #7 and #8)



H. After drying, nail through the front panel into the floors and ceiling.

I. Attach the hinges. (ILLUSTRATION #9)

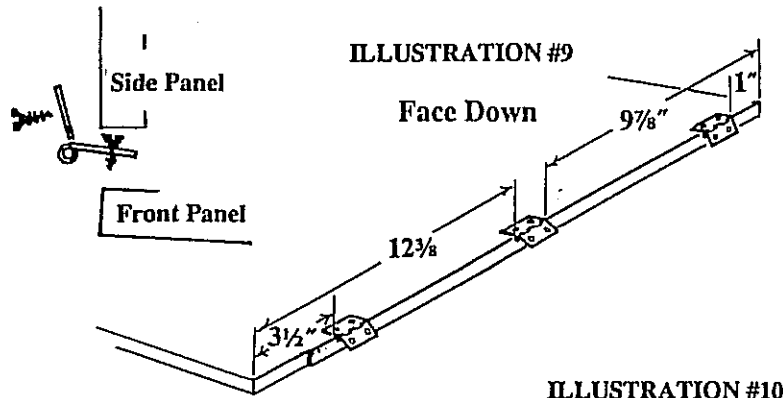
II. Screw the hinges to the inner face of the front panels, pin down, spaced as shown. (ILLUSTRATION #9)

I2. Mount the front panels, keeping the panels tight to the top floor for swing clearance at the bottom.

J. Glue the porch roof base to the edge of the front roof, centered over the balcony. Protect the balcony from glue drips with Saran Wrap.

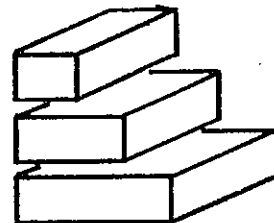
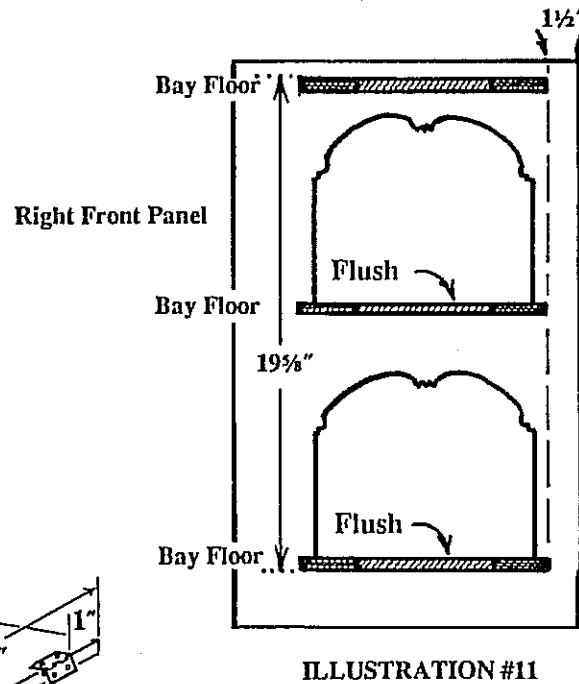
K. Glue the "V 40" triangles and the top porch roof in place. (ILLUSTRATION #7)

L. Assemble and glue the steps as shown. (ILLUSTRATION #10)



3. VICTORIAN RIGHT FRONT ASSEMBLY

A. Glue the bay floors (9 9/16" x 2 3/4" mitered) in place as shown. (ILLUSTRATION #11) Let dry, then nail through the front panel into the floors. The top edge of the bay floors are flush with the cutouts and 1 1/2" from the right edge of the front panel. Use 19 3/8" bay walls to locate the height of the top bay floor.



B. Glue and nail the right and left bay walls (identified by the bevels as in ILLUSTRATION #12) to the floors. Be sure the 2 3/8" window space is at the bottom. Mark the position of the center floor for easier nailing, then glue and nail on the center bay wall.

ILLUSTRATION #12

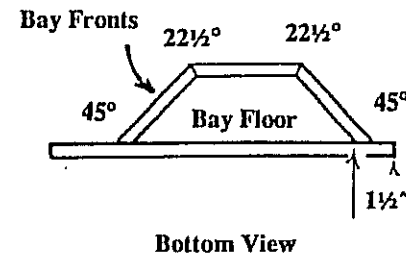
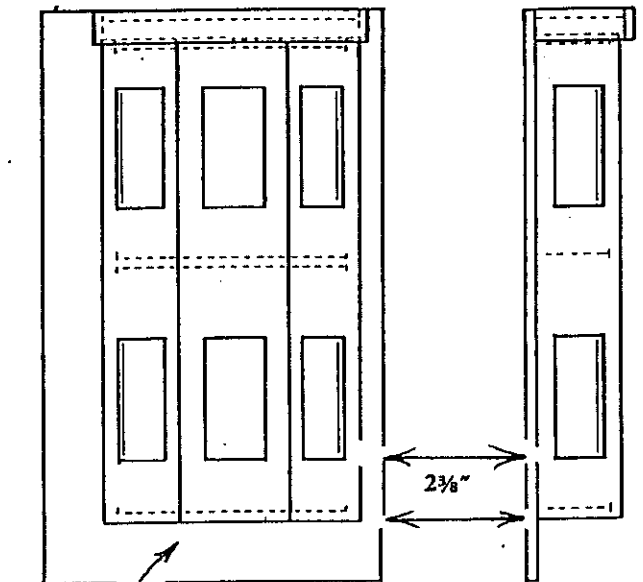
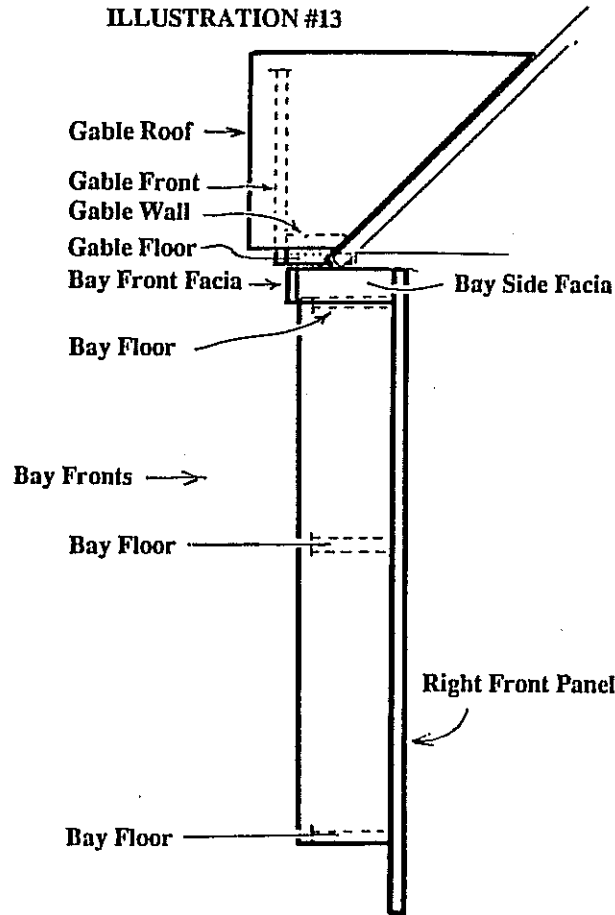


ILLUSTRATION #13



C. Glue and nail the bay facia front ($11\frac{1}{8}'' \times 1\frac{3}{8}''$), sides ($3\frac{1}{8}'' \times 1\frac{3}{8}''$), and ceiling ($10\frac{3}{8}'' \times 3\frac{1}{8}''$) together as shown.

(ILLUSTRATIONS #13 & 14)

Chamfered edges of the side facia must face inward at the rear of the assembly. Install the assembly over the top of the bay, flush to the front panel top edge. Glue.

D. Attach the hinges and mount the right front panel as shown in ILLUSTRATION #9 but reversed.

E. Glue and nail together the gable floor ($10\frac{3}{4}'' \times 2\frac{3}{8}''$), sides, and front. Glue this assembly to the house roof in rest position.

(ILLUSTRATION #15)

Protect the bay ceiling with Saran Wrap.

F. Lay the gable roofs flat, peak edges touching, bevels down. Tape firmly across the peak, invert, and glue. Glue this assembly to the gable front and front roof. Use brads (pushed in — don't hammer!) and lots of tape to hold the roof assembly in place. Make sure the gable eaves are even. Nail after the glue dries.

4. MOVING ON

A. A little twist or spring in the hinged panels can be controlled with a cabinet door magnet available at your local building supply store.

B. Use your Planbook only as a guide for the finish work on the dollhouse. The Houseworks Component Set for this house contains finish materials listed on Page 7 of the Planbook.

These materials, as well as $\frac{1}{16}'' \times \frac{1}{2}''$ stripwood, are available at your miniatures store and may be used for a great finished dollhouse.

C. REAL GOOD TOYS recommends the use of "Quick Grab Cement" for gluing on clapboard. Do not use water-based glue.

D. Finally, the passageway from the center front to the center rear room will accept a Houseworks #6011 French Door.

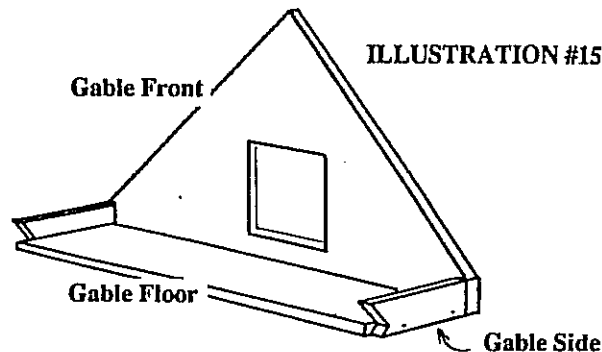
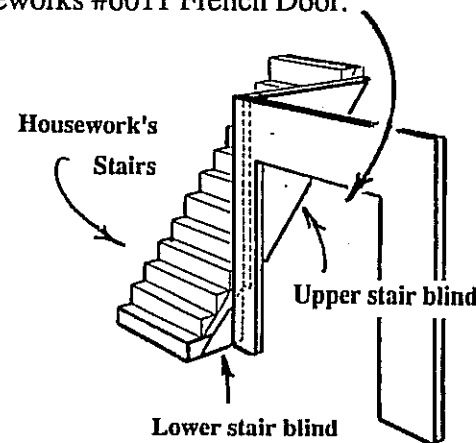
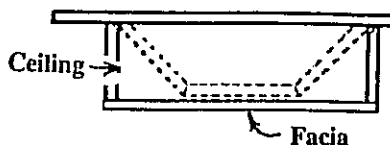


ILLUSTRATION #15

ILLUSTRATION #14 Top View



Real Good Toys

America's

Collector Quality

Dollhouse kits

Options (not included in the shell kit):

- #1125 Shingle Dye
- SC Copper Flashing
- #T-10 Turntable
- #H-303K Component Kit, Includes:
 - (1) 1001 3-in-1 Dollhouse Planhook
 - (1) 1107 Door Knecker
 - (6) 1114 Knobs w/ Key Plate
 - (1) 5004 Window for Dormer
 - (6) 5025 Louvered Shutter
 - (6) 5032 Double Hang Window
 - (1) 5039 Gable Window
 - (7) 5042 Victorian Window
 - (1) 6007 Interior Door
 - (1) 6018 Exterior Door
 - (1) 7000 Straight Stair Kit
 - (1) 7002 Turnst Spindles
 - (7) 7009 Panel Railings
 - (1) 7011 Newel Posts
 - (2) 7012 Stair Spindles
 - (1) 7019 Post Bracket
 - (1) 7027 Eaves Bracket
 - (3) 7030 Veranda Corner Post
 - (2) 7036 2/8" Clapboard Siding, 24"
 - (1) 7039 2/8" Clapboard Siding, 12"
 - (4) 7046 1/2" Corner Molding
 - (1) 7104 Square Butt Shingle (1000)
 - (6) 7004 Square Butt Shingle (100)
 - (1) 7005 Fishscale Shingle (100)

the Front-Opening Victorian Smooth Shell*

Dollhouse Kit #H-303

33"W x 22¹/₂"D x 33¹/₄"H

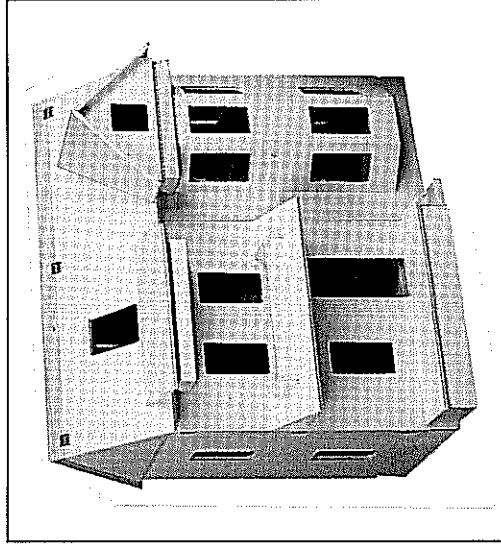
*The *Finished Victorian* pictured Above

Includes:

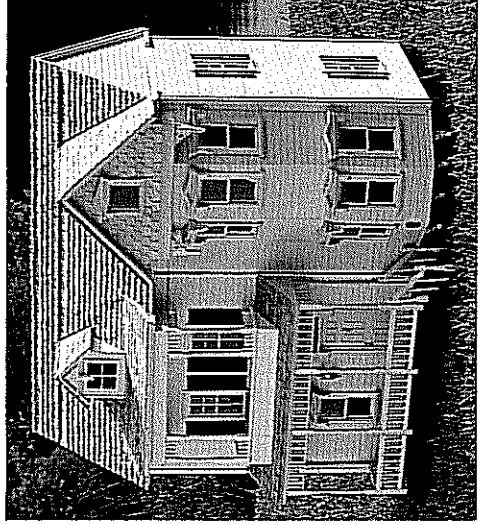
- H-303: Shell Kit
- H-303K: Component Kit (Purchased Separately)

The Shell Features:

- Front-Opening design
- 3/8" Cabinet grade plywood
- Step-by-Step shell instructions
- 10 rooms (including bathroom and hallways)
- Easy and durable construction
- Handcrafted, pre-cut precision parts



Assembled Shell



Real Good Toys ♦ 10 Quarry Hill ♦ Barre, Vermont 05641 ♦ (802) 479-2217